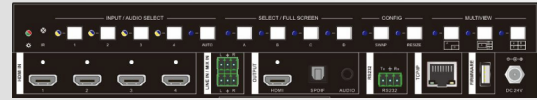


SC-PSW0401E-Seamless-MV



4K Presentation Device 0401

- 4K@30Hz 4:4:4
- 4 x HDMI Input, 1 x HDMI Output
- 1 x Line and 1 x Mix audio input
- FPGA
- Seamless
- Multiview

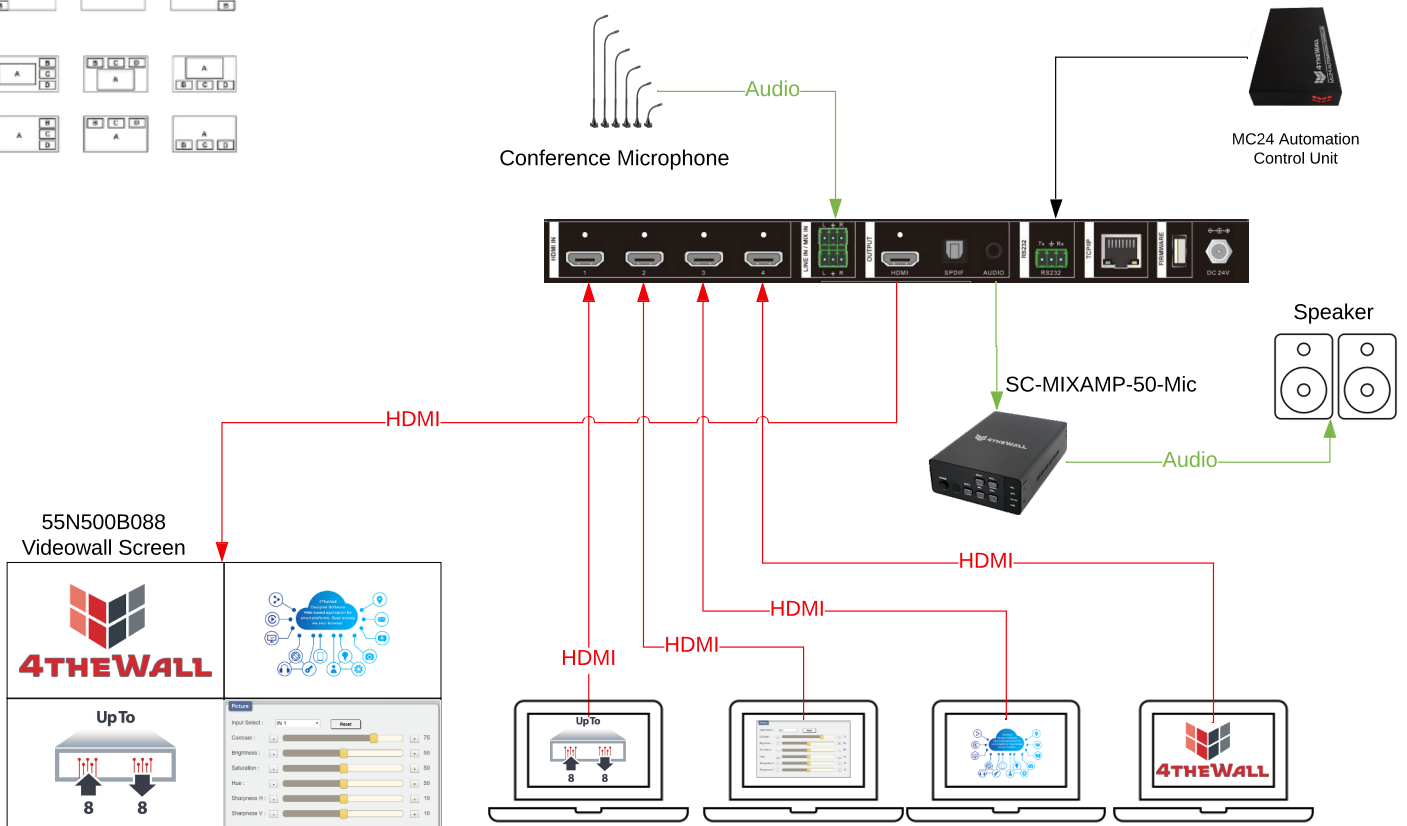
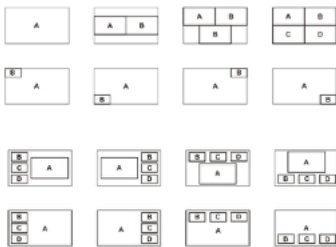
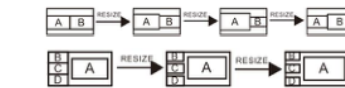
It has ideal and seamless transition feature for meeting and VIP rooms.

SC-PSW0401E-Seamless-MV supports fullscreen , PIP besides scene designs that capable of multiview designs.

Mixer stereo audio input, audio embedding and audio de-embedding functions,

Features

- 4K featured, 4 HDMI input and 1 HDMI output,
- Seamless matrix and Multiviewer,
- 4K@30 4:4:4 and HDCP 2.2 supports,
- Supported automatic scaling function for all inputs,
- Audio embedding and audio mixer function,
- Optical and Stereo audio output support,
- Automatic input matrix on fullscreen mode support,
- Front panel control buttons,
- 16 x predefined layout function,
- FPGA supported cpu function,
- Ability to change the size of layout windows in 3 steps function,
- IR, RS232 and ethernet control feature



Input and Output

Video Inputs	4 x 4K HDMI 1.4b
Audio Inputs	Line Stereo and mixer audio input
Video Outputs	1 x 4K HDMI video and audio output
Audio Outputs	1 x HDMI, 1 x Optic and 1 x Line Stereo audio output
Resolutions	Maximum 4K@30 Hz 4:4:4

Network Features

Ethernet	1x RJ45 100Mbit
IP address features	DHCP, Fixed IP

Management Features

Hardware Software Upgrade	Ethernet
Management Option	Web user interface, API, front panel button

General Features

Power Connection	24V DC 1.25 Amp
Working Temperature	-5°C~55°C
Humidity Range	10~90% RH
Storage Temperature	-25°C~70°C
ESD Protection	±8kV (air-gap discharge) ±4kV (connection discharge)
Dimensions	285mm × 172.5mm × 27mm - Width/Depth/Height
Weight	1.24kg
Power Value	58.3W
Mounting	1U 19" rack compatible

Certification

AB/ABD	CE / FCC
--------	----------

Package Details

Dimension (packaged)	350mm x 320mm x 86mm - Width/Depth/Height
Weight (packaged)	2. kg
Package Content	1xSC-PSW0401E-Seamless-MV, 1xIR remote control, 1xRack mounting kit, 1x connector set, 1xRS232 cable, 1x power adaptor , 1x user manuel



Front View



Rear View