

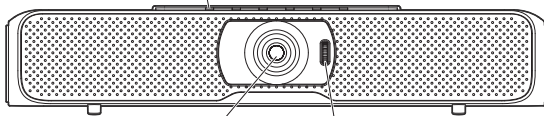
BV40 Video Conference Camera with Expansion Microphone(s)

Controls and Functions

< Front View >

Functions LEDs indicator

The indicator lights up when using the device.

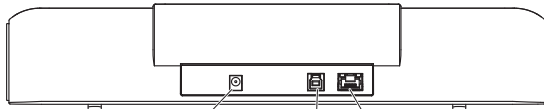


Lens
(4K)

Camera Scroll wheel

Adjust ±15 degrees of the lens
go up and down.

< Rear View >

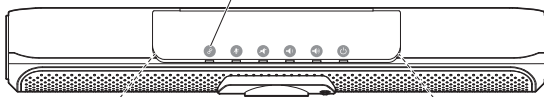


DC IN 12V Power supply interface

For LAN
For connecting USB3.0 Cable

< Top View >

Functions of the buttons on the top



1 Connection indicator

2 Microphone mute

3 Speakerphone mute

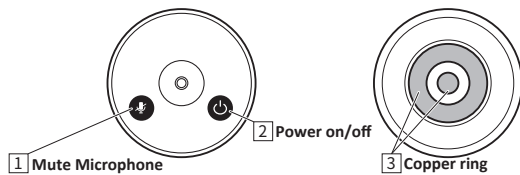
4 Volume down

5 Volume up

6 Power on/off

Buttons	Indicator status	Functions
1 Connection indicator	Orange LED lights Blue LED flashes	Connected to PC successfully via USB Disconnected
2 Microphone mute	Orange LED lights	All the mics mute
3 Speakerphone mute	Orange LED lights	Speakerphone mute
4 Volume down	Blue LEDs decrease progressively	Volume down
5 Volume up	Blue LEDs increase progressively	Volume up
6 Power on/off	Blue LED lights	Press 3 seconds to power on
	Blue LED off	Press 3 seconds to power off

< Wireless Expansion Microphones. Top View(left), bottom View(right) >



Buttons	Functions
1 Mute Microphone	Microphone mute
2 Power on/off	Press 3 seconds to power on/off
3 Copper ring	When using the charging tray, the charging copper ring acts as the charging interface. Charging copper ring contacts spring probe for charging

Expansion mics indicators

Indicator status	Working status of the expansion mic
Blue LED lights	Expansion mic connected
Blue LED flashes	Expansion mic disconnected
Red LED lights	Microphone mute or is charging
Red LED flashes	Low battery
Purple LED lights	Expansion mic full charged

Battery info

Expansion mic	Battery	Charging time	Standby time	Working time
	800mAh	1 hours	6 months	8 hours

Lens	4K
EPTZ	4x
HOV	110°
Effective pixel	8.0 Megapixel
Sensor	1/2.5" SONY CMOS
Interface	USB3.0, LAN
Other	Auto-Framing(AI)

2) The audio output of this device use the same USB interface with video and supports the standard UAC protocol. All the software which supports the UAC protocol can collect the audio of this device.

3) Daisy-chain max up to 3 wireless expansion microphones connect to main unit via RF2.4G transmission. Each expansion microphone provides 3 meters pick up range. To ensure the call quality and echo cancellation effect, please do not move the expansion microphone after placing it on the table. At the same time, expansion microphones need a distance at least 1 meter from the speaker.

4) The main unit has an internal auxiliary microphone for emergency use when the expansion mics are out of power. Expansion mics are recommended for the best call experience. When any expansion mic is turned on, the internal mic will be automatically disabled.

Combination Key Function

1) Chinese and English switching

Press and hold for 5 seconds to switch prompt tone between Chinese and English.

2) Prompt tone ON/OFF

Prompt tone is turned on by default. Press and hold for 5 seconds to turn ON/OFF.

3) Enable or disable the internal microphone

Press and hold for 5 seconds to enable or disable the internal mic

4) Remote upgrade mode

(This function needs the support of the manufacturer, please do not use it under normal circumstances)

Press and hold for 5 seconds to enter remote upgrade mode, only the orange indicator of Power button lights.

Press and hold for 5 seconds to exit the upgrade mode.

Pairing Wireless Microphones

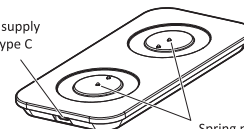
Turn on the expansion microphone, the indicator light flashes blue. Press the microphone mute button and the indicator light turns red. Put the expansion microphone close to the main unit. Press and hold the microphone mute button for 10 seconds. After the indicator light stops flashing, the wireless microphone is successfully paired.

Music Mode

Press the microphone mute button of the main unit, then all the microphones are disabled. Now only the speaker works and enters the music mode, and it is the stereo play mode.

Charging tray

Charging tray power supply
interface: USB 2.0 - type C



Spring probe: When the charging tray power on, expansion mic's charging copper ring contacts spring probe for charging

What is content in package ?

- | | |
|-------------------------------|---|
| ① Video conference camera * 1 | ⑥ USB 3.0 cable 3M * 1 |
| ② User's manual * 1 | ⑦ Power supply of the camera * 1 |
| ③ Expansion mics * 1-3 | ⑧ Power supply of the charging tray * 1-2 |
| ④ Charging tray * 1-2 | ⑨ USB - type C cable * 1-2 |
| ⑤ Bracket and screws * 1 | ⑩ Remote control (no battery) * 1 |

Remote control's functions

Buttons	Functions
1 Power on/off	Power on/off
2 Zoom out	Camera zoom out
3 Zoom in	Camera zoom in
4 Camera functions' menu	Camera functions' menu (center) EPTZ control (up, down, left, right)
5 Microphone mute	Microphone mute
6 Speakerphone mute	Speakerphone mute
7 Volume up/down	"+" volume up; "-" volume down

Note: If the remote control is not available, maybe the batteries ran out. Please change the new batteries(AAA*2pcs) .

Auto-Framing

VB40 support Auto-Framing camera control, automatically moves the lens and adjusts the zoom to comfortably frame meeting participants in rooms of all shapes and sizes.

- 1 Press "Camera functions menu" (center), select " Setup"

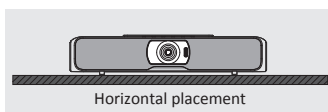
MENU	
Exposure	->
Color	->
Image	->
>> Setup	->
Info	->
Restore Default	->
SETUP	
Language	English
Pan Speed	20
Tilt Speed	20
Zoom Limit	X4
Zoom Speed	10
>> AI Function	ON
Refresh Freq	High

- 2 Select " AI Function" to "ON", Auto-Framing function turns on. AI "Refresh Freq" is adjustable "Low/Mid/High".

Installation instruction

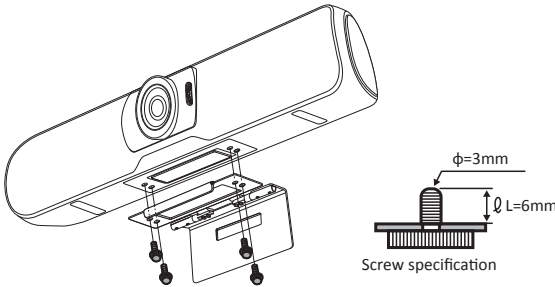
1 Desktop installation

Put the device on the table or screen and make sure the horizontal installation.



2 Bracket installation

Screw the bracket to the screw hole at the bottom of the device and tighten it. Then the user can install a bracket at the bottom of the device. The screws of the bracket must meet the following specifications.



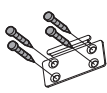
Note:

- ① The bracket must be installed on the flat surface.
- ② The screws on the bracket of the video conference camera can't be used on the higher place, just like the ceiling mount or partition mount.

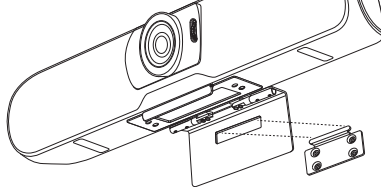
3 Wall mount

- ① Install the bracket at the bottom of the camera according to the **2 Bracket installation**.
- ② Screw the bracket on the wall, refer to the following picture 1.
- ③ Fasten the camera with bottom bracket on the wall mount, refer to the following picture 2.

(Picture 1)



(Picture 2)



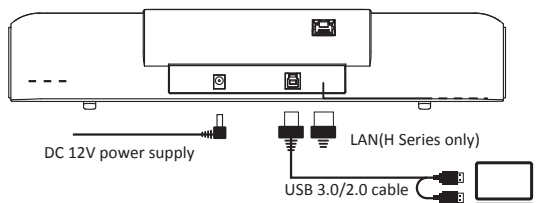
Note:

- ③ The wall mounted bracket must be flat
- ④ The wall bracket is used in conjunction with the bracket. The device must install the bracket

Connect to the computer

- ① Connect the 12V power supply to the camera.

Connect the standard USB cable with the camera and computer or other host computer. Refer to the following picture:



Video instruction

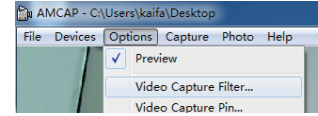
This device output video through USB. And it supports standard UVC protocol. All the software which support the UVC protocol can collect the video of this device.

1) Demonstrate the video usage of the device with common software AMCAP.

- ① Open the AMCAP (available in the CD) and click the Devices. Then choose the 4K UCamera (or the similar option)

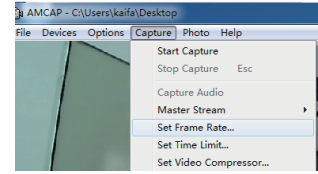


- ② Click the Options and choose Preview. Then the user can preview the video. Refer to the right picture.

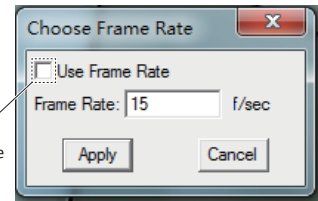


- 2) If the frame rate is not enough, the user can check whether the " Use Frame Rate" is ticked off. If yes, please cancel the tick

- ① Click the Capture and then choose Set Frame Rate

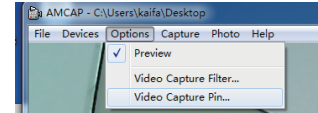


- ② In Choose Frame Rate, check whether the "Use Frame Rate" is ticked off. If yes, please cancel the tick. And then click the Apply



3) Change the different resolution and frame.

- ① Click the Options and choose Video Capture Pin...



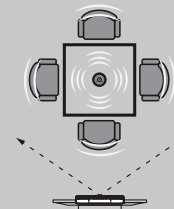
- ② Set the different resolution and frame according to the user's requirement. And then click Apply



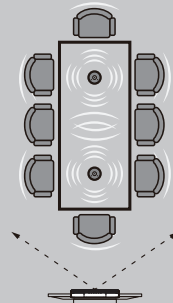
Click Apply

How is working in meeting rooms ?

1 microphone



2 microphones



3 microphones

