

VWFC A3247-L

VIDEO WALL BOLT DOWN FLOOR-TO-CEILING MOUNT, MODULAR 3X2

FOR 42"-47" SCREENS, LANDSCAPE

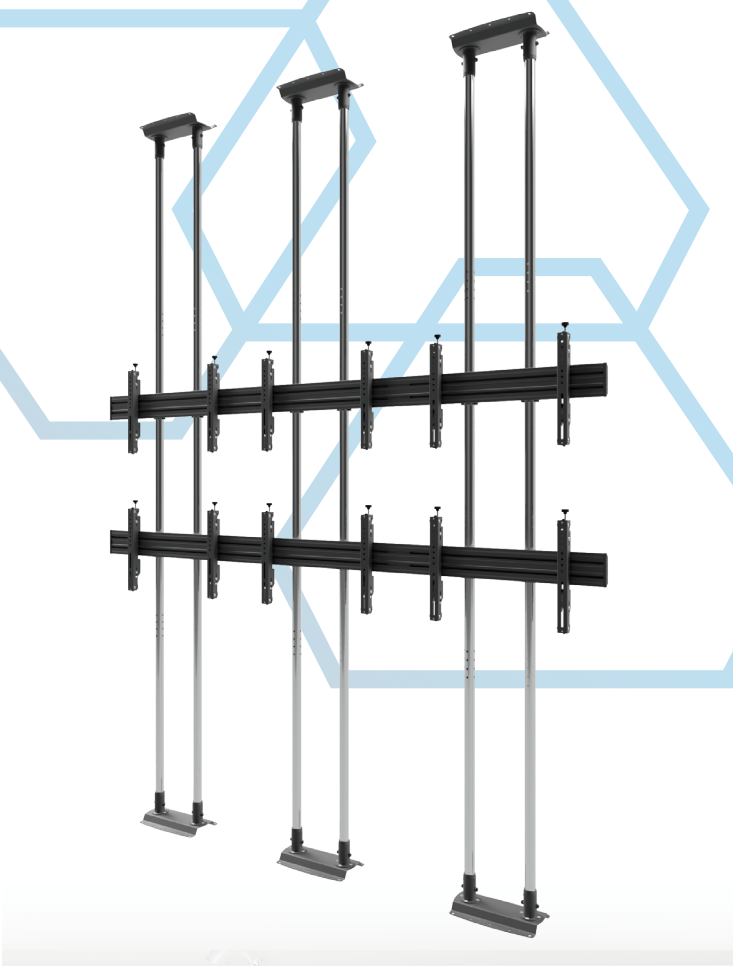
With its modular design, VWFC A3247-L allows the installation of six 42"-47" screens in 3x2 landscape orientation. The design is characterised by durability, high quality and aesthetics. The video wall attached to the ceiling and floor allows a safe solution to be built in accordance with the expectations of the most demanding customers. VWFC A3247-L is used in places where there is a need for dynamic and effective communication with the audience, while ensuring the maximum safety.

FEATURES

- High quality and aesthetics
- Durable design
- Screen carrying plates made of aluminum
- Up to 6 x 42"-47" screens
- Independent 8-point micro-adjustment ensures perfect alignment of screens without the use of tools
- Screen protected against being slid out accidentally
- Integrated cable management system for smart installation
- Screws protecting against accidental or unauthorised removal of the screen

PRODUCT SPECIFICATIONS

| | |
|-----------------------------|--|
| Short index | VWFC A3247-L |
| Category | Video Wall Bolt Down Floor-To-Ceiling Mounts |
| Product group | Video Wall & Menu Board Mounts |
| Colour | Black |
| Warranty | Limited 5-years |
| Number of screens | 6 |
| Minimum screen size | 42" |
| Maximum screen size | 47" |
| Maximum load | 330 kg |
| VESA Mounting Compatibility | 100x100 up to 600x400 |



42"-47"



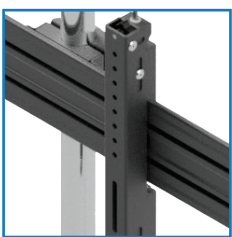
100x100
600x400



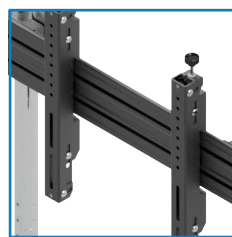
330 kg



RoHS
Compliant



Independent 8-point micro-adjustment ensures perfect alignment of screens without the use of tools



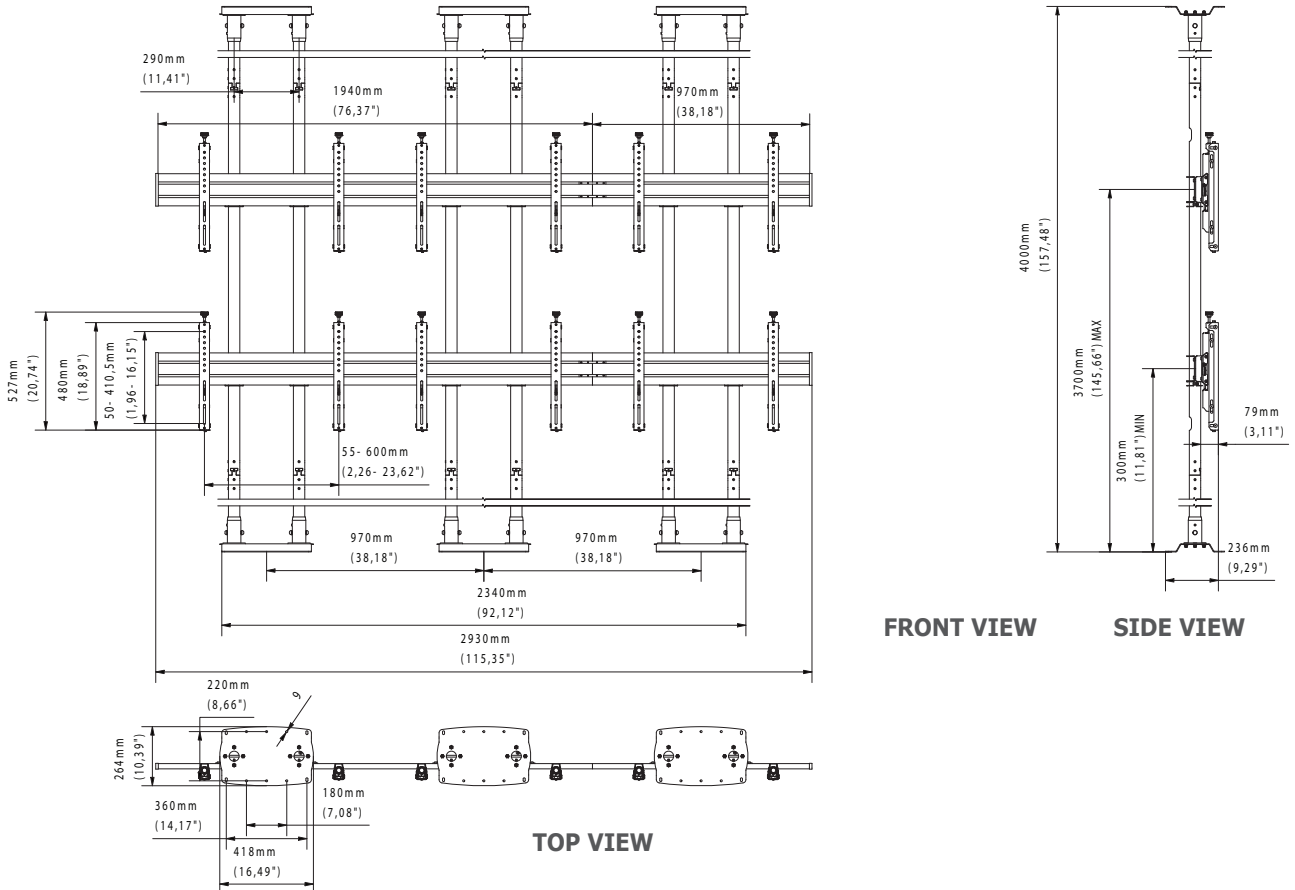
Protection against uncontrolled removal of the screen



Cable management



Security screws to prevent accidental or unauthorized removal of the screen



TECHNICAL SPECIFICATIONS

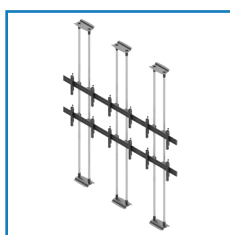
| | |
|-------------------------------------|---|
| Product dimensions | W: 264 mm D: 2930 mm H: 4000 mm (W: 10,39" D: 115,35" H: 157,48") |
| Product weight | 125 kg (276 lb) |
| Max. distance from mounting surface | 3700 mm (145,67") |
| Min. distance from mounting surface | 300 mm (11,81") |
| Max. mounting pattern | 600 mm x 410,5 mm |
| Min. mounting pattern | 55 mm x 50 mm |

LOGISTICS DATA

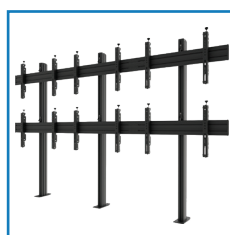
| SAP INDEX | EAN CODE | COLOUR |
|-----------------|---------------|--------|
| WUSU-VWFA3247-L | 5902841112742 | BLACK |

HS Code (Harmonized System): 732690, HTS Code (Harmonized Tariff Schedule): 7326909890, Country of Origin: Poland

ACCESSORIES AND RELATED PRODUCTS



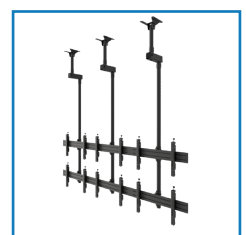
VWFCA3257-L



VWSA3247-L



VWTA3247-L



VWCA3247-L