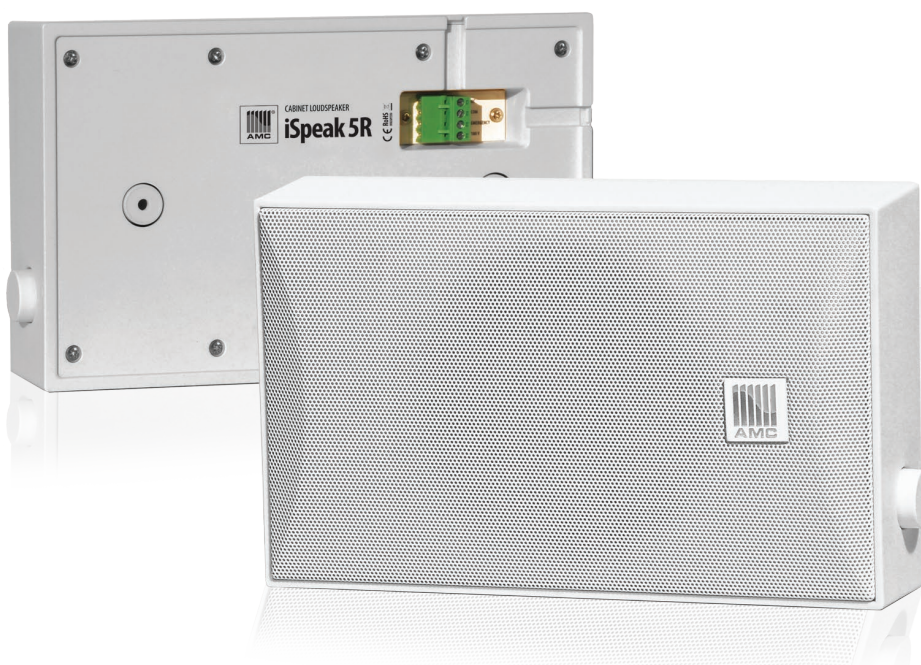


# iSpeak Surface Mount Plastic Loudspeakers

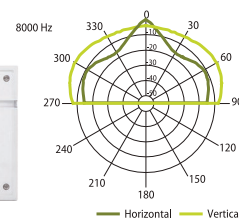
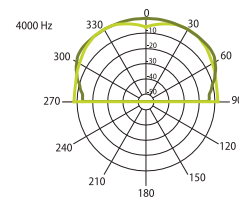
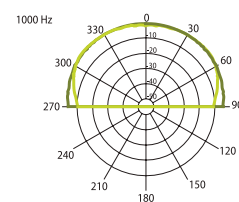
Plastic enclosure surface mount loudspeaker with built-in volume attenuator.

# iSpeak 5R

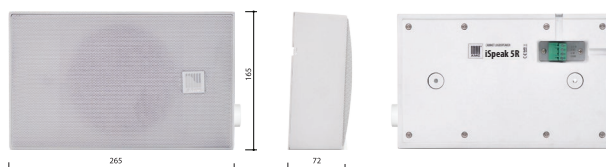
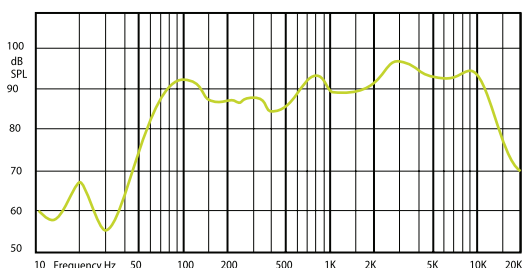
iSpeak 5R ABS plastic cabinet loudspeakers with built-in 100V transformer and internal volume attenuator for constant voltage speaker installation systems. When priority message is translated the settings of attenuator will be eliminated and speaker will be used in a full power. Effortless mounting on any surface: walls or ceilings. Modern, simple and compact form design cabinet loudspeaker with integrated 5" full range driver. This loudspeaker produces clear intelligible sound and is good for speech and background music applications. Especially suitable for places where loudspeakers should not make any influence to interior.



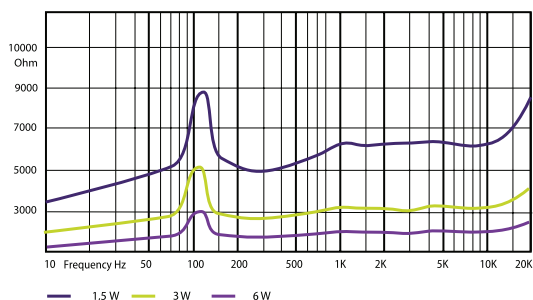
HORIZONTAL / VERTICAL POLAR DIAGRAMS



FREQUENCY RESPONSE



IMPEDANCE



Technical Specifications	iSpeak 5R
Rated power	6 W
Transformer power taps	6 W - 3 W - 1,5 W
Sensitivity	90 dB (1W/1m)
Maximum SPL	102 dB (Pmax/1m at 2834 kHz)
Frequency response	70 Hz - 18 kHz
Dispersion at 1000 Hz	180° (H), 140° (V)
Driver dimensions	5" (127 mm)
Dimensions	265 mm x 165 mm x 72 mm
Weight	1,2 kg
Material	High impact polystyrene plastic, steel grill
Colour	White (RAL 9016)